



14 Walnut Tree Avenue, Loose, Maidstone, Kent, ME15 9RN
Price £450,000

OUTSTANDING AND BEAUTIFULLY PRESENTED FAMILY HOME SITUATED IN THE SOUGHT AFTER VIALLGE OF LOOSE WITHIN WALKING DISTANCE OF OFSTED RATED 'OUTSTANDING' LOOSE PRIMARY SCHOOL. This fabulous family home is situated in a prime position in Loose over looking the King George V playing fields. The village of Loose provides excellent local amenities and a very well respected primary school. The village sits about 2-miles from the centre of Maidstone, the county town providing a wide range of shopping and social facilities, together with two mainline London stations. Marden station is about 10-minutes drive from the property with fast regular services to London Bridge, Waterloo and Charing Cross. There are four excellent grammar schools together with the renowned Independent School in Sutton Valence all within a 5-mile radius of the house. Offering a modern interior with original features, the home has been carefully updated and extended by the current owner. On the ground floor, there is a spacious entrance hall housing a useful downstairs cloakroom and understair storage cupboard. The living accommodation is spread across three rooms, with the lounge at the front of the home with feature bay window, the dining room to the centre with a log burner and the kitchen/breakfast across the rear of the home which has been recently fitted complete with utility section and excellent storage space. The reception rooms benefit from ceramic tiles throughout, with underfloor heating in both the kitchen and lounge. Upstairs, there are three bedrooms and a family bathroom suite with P shaped bath and waterfall shower head. Outside, there is lawn and garden path to the front. To the rear, a manicured garden with decked seating area, outside sink with hot and cold water taps and a detached garage with insulated office room and electric roller door to the front leading to the parking. If you are searching for a beautiful family home, then call Page and Wells today to avoid missing out



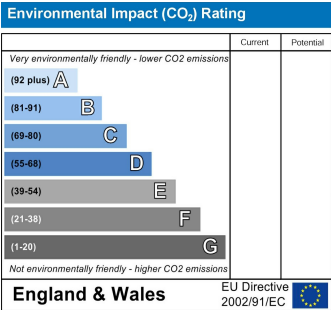
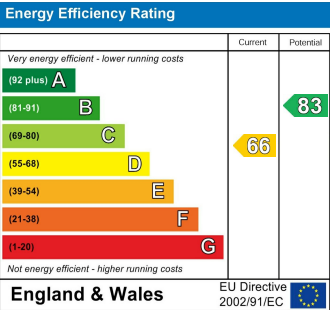
To The Ground Floor

Entrance Hall

Downstairs Cloakroom

Lounge/Dining Room 25'3 x 12'2 (7.70m x 3.71m)

Kitchen/Breakfast Room 16'10 x 16'10 (5.13m x 5.13m)



To The First Floor

Landing

Bedroom 1 12'1 x 11'7 (3.68m x 3.53m)

Bedroom 2 10'10 x 10'8 (3.30m x 3.25m)

Bedroom 3 7'2 x 7' (2.18m x 2.13m)

Family Bathroom

Externally

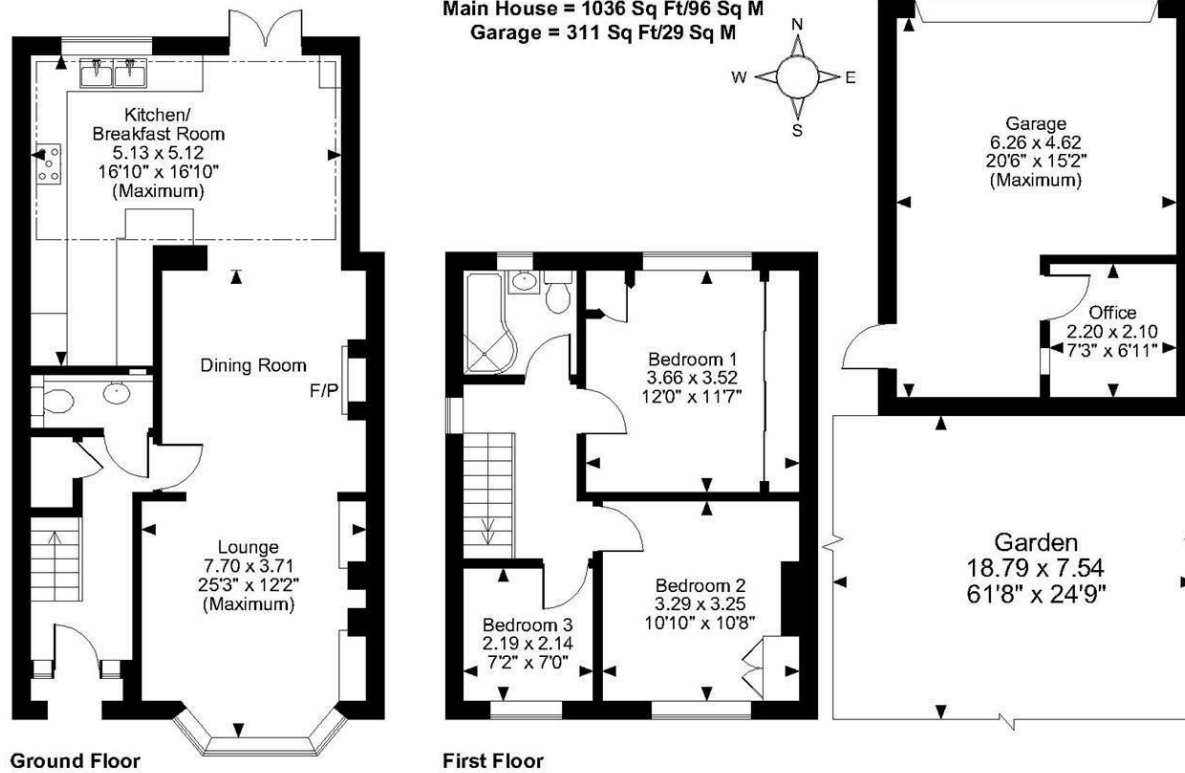
Garden To The Front

Manicured Rear Garden

Detached Garage 20'6 x 15'2 (6.25m x 4.62m)

Office 7'3 x 6'11 (2.21m x 2.11m)

Walnut Tree, Avenue Loose, Maidstone
Approximate Gross Internal Area
Main House = 1036 Sq Ft/96 Sq M
Garage = 311 Sq Ft/29 Sq M



FOR ILLUSTRATIVE PURPOSES ONLY - NOT TO SCALE

The position & size of doors, windows, appliances and other features are approximate only.

© ehouse. Unauthorised reproduction prohibited. Drawing ref. dig/8489461/SS

